



FINISHED FOUNDATION WALL

FUN FACT

Structural steel erection of a building generally moves at a very fast pace. This is due in large part to columns and beams being pre-fabricated for exact fit for assembly onsite. A great example for this is the Empire State Building in New York City. Steel erection began on March 17th, 1930, with the final piece being placed the same year on September 19th at 1,048 feet above Manhattan. This race to the top of the 102nd story took only 6 months!



Jared Andersen
Project Manager

CONSTRUCTION UPDATE

Over the past month, we have been steadily progressing on the footings and foundations of the new medical office building. The masons have completed work on the stair tower and have set their sights on the elevator shafts. Temporary fencing has also gone up to surround and secure the construction site. Despite some significant weather related challenges, we are pushing full steam ahead on getting “out of the ground” with structural steel beginning early December.

Jared Andersen, Project Manager
JaredA@elzinga-volkers.com

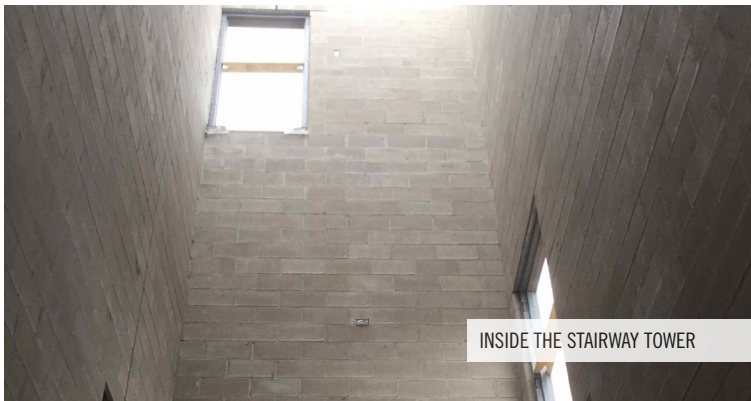


LOOKING AHEAD

Dan Blamer, Field Manager

danb@elzinga-volkers.com | 231-299-7528

With the southeastern stairway tower now complete, Bay Masonry has begun laying block for the elevator shaft. The foundation wall around the perimeter of the building is also complete and backfilled, so the concrete crews from Spence Brothers will be shifting their attention to the interior column pads. These pads will allow G2 Erectors to begin placing the building's structural steel. The steel will be erected in four sequences, one from each corner of the building. Following this, the second floor and roof decking will be installed, and Bouma Construction will begin the metal stud framing; the first step in the building envelope.

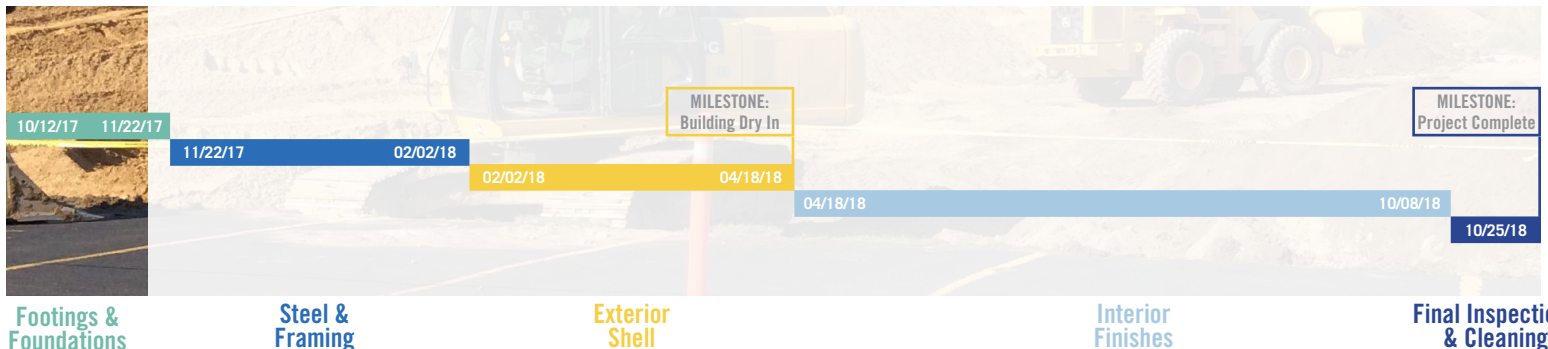


INSIDE THE STAIRWAY TOWER



VIEW FROM THE NE CORNER OF THE JOB SITE

Track the Project's Progress as the View Takes Shape!



SAFETY Matters

HIGH VISIBILITY

The project uses large, heavy earthmoving equipment, which is loud and dangerous to those working and walking through the construction site. To reduce the chance of injury, all visitors and workers on the site are required to wear "high visibility" clothing or vests. Workers also use special signals and safety precautions to communicate with and prevent hazards for the equipment operators.

TEAM SPOTLIGHT

Who's Who On Site



Bay Masonry has been onsite for the past several weeks, and their work ethic has been nothing short of excellent. Tom Hubbard, their foreman, has a particularly impressive attention to detail and, as a result, coordination with E&V and other trade contractors has gone very smoothly. We look forward to working with them for the remainder of the project.